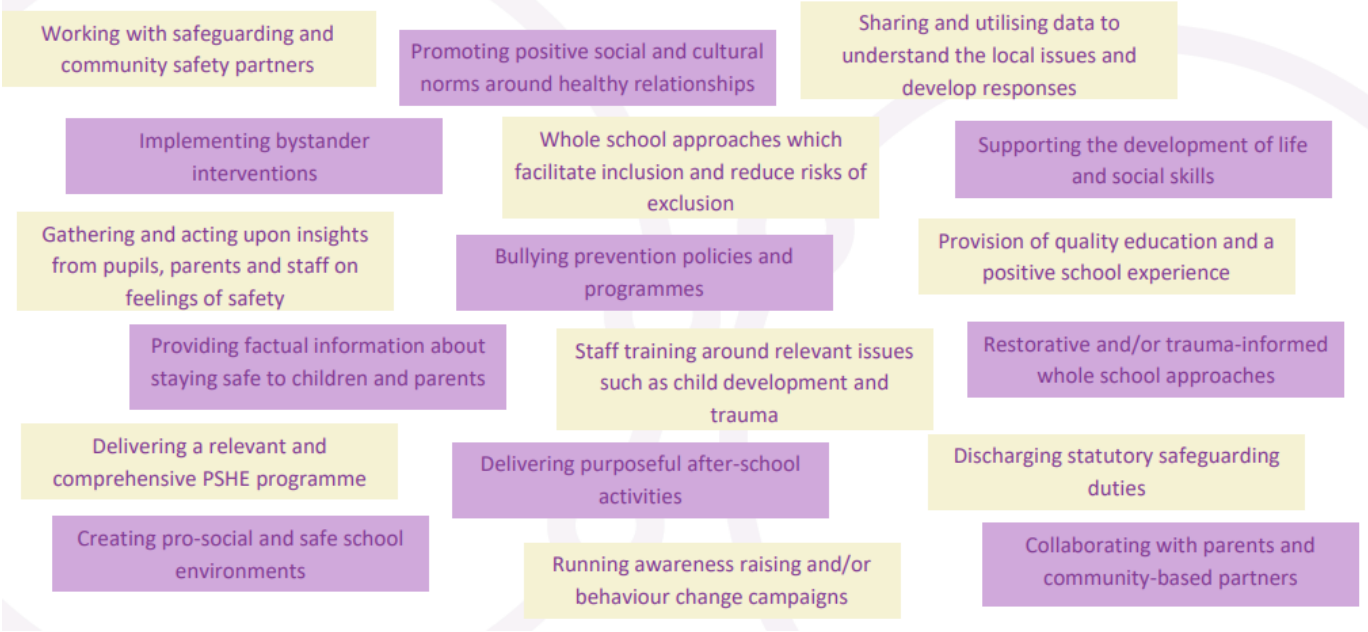


## Violence Prevention & Reduction at Thurnby Mead Primary Academy



### Examples of how Education Partners already contribute to violence prevention and reduction



## Our School Provision

Work with our children	Work with our Community & Partners	Continuing Professional Development
<ul style="list-style-type: none"> <li>• Excellent curriculum and strong teaching team</li> <li>• KAPOW PSHE Scheme – comprehensive units on Health &amp; Wellbeing, Economic Wellbeing and Family &amp; Relationships running through years 1-6</li> <li>• Warning Zone – Year 6</li> <li>• Strong Girls Can – Year 6</li> <li>• Boys, Bravado, Bravery &amp; Banter – Year 6</li> <li>• Magistrates in the Community – Year 6</li> <li>• NSPCC Speak Out Stay safe – 08001111 awareness</li> <li>• Assemblies – Character Muscles &amp; Route to Resilience</li> <li>• School Culture</li> <li>• 3 school rules: Be Respectful, Be Safe &amp; Be Ready</li> <li>• STOP anti-bullying culture</li> <li>• After-school clubs every evening</li> <li>• On-line safety awareness in every computing lesson</li> <li>• ELSA sessions</li> <li>• Fun Time sessions – early social skill building</li> <li>• Zen Zone behaviour support</li> <li>• Comprehensive RB2L provision – attendance, behaviour, therapeutic interventions, enrichment</li> <li>• Well-being workshops years 1-6</li> <li>• Mentors in Violence Prevention Project</li> </ul>	<ul style="list-style-type: none"> <li>• Dilwar Hussein from the Centre for Trust, Peace &amp; Social relations at Coventry University - family workshops</li> <li>• Restorative Behaviour Policy and collaboration with the Trust Inclusion Lead to minimise exclusions</li> <li>• Pupil surveys and interviews</li> <li>• Parent Surveys</li> <li>• Staff surveys</li> <li>• Collaborating with Early Help partners</li> <li>• Collaborating with Social Care partners</li> <li>• Collaborating with The Children’s Centre</li> <li>• Collaborating with the Police, PCSO and other emergency services</li> <li>• Attending the VRN briefings</li> <li>• Collaborating with The Peace Centre</li> <li>• Collaborating with Christ Church</li> <li>• EMHST support</li> <li>• Newsletters, workshops and information to parents on Classdojo</li> <li>• EMHT presence at parents’ eve &amp; assemblies related to well-being</li> </ul>	<ul style="list-style-type: none"> <li>• Adverse Childhood Experiences training for all staff</li> <li>• Restorative Behaviour Policy review &amp; training for all staff</li> <li>• Behaviour as Communication training for all staff</li> <li>• Weekly safeguarding briefings</li> <li>• Team Teach training for all staff</li> <li>• Dilwar Hussein – challenging conversations with children training for teaching staff</li> <li>• Unconditional Positive Regard &amp; Zones of Regulation training all staff</li> <li>• TMET Professional Learning Day – Key Speaker: Nazir Afzal Chief Crown Prosecutor</li> <li>• Attending DSL Forums with the LA and Trust</li> <li>• Attending Attendance Forum with the Trust</li> </ul>